



The Kitchen Depot
Made For A Lifetime



YOUR INSPIRATION

FEAST YOUR EYES

DISCOVERY RANGE

KITCHEN CHRONICLES

Renovate & innovate;
transforming your kitchen space.

Introducing the Discovery
range. Uniquely uncomplicated,
incredibly affordable.

Stories, tips, and recipes for
culinary creativity.

A diverse selection of shaker and in-frame effect wooden doors, each with its distinct character.

The warmth and natural beauty of solid wood paired with the precision of modern design create a harmonious blend between rustic craftsmanship and modern functionality.

Distinctly charming, naturally crafted.

/ CONTENTS PAGE

WELCOME EVERYONE

THE HEART OF OUR HOME

What's On?.....	4
5-Star Rating On Trustpilot.....	8
Glasgow Kiltwalk	12
Spotlight On Showrooms.....	20
Discovery Range	22
Paint-To-Order	30
Our Handles Collection	31
Try Our Online Kitchen Planner.....	32
Manufacturing FAQs	36
June's Gin And Tonic Cupcakes	38

INSPIRING CUSTOMER KITCHEN RENOVATIONS

Setterfield's Kitchen.....	6
M'Creadie's Kitchen.....	16
Dawkins' Kitchen.....	26
O'Hara's Kitchen.....	34

IDEAS, INSPIRATION, INSIGHT

Kitchen Storage Tips: The Perfect Pantry	11
Kitchen Design Trends You Need To Know	14
Smarter Storage With A Modern Kitchen	18
What Your Favourite Kitchen Colour Says About You.....	24
What Is The Golden Triangle?	28



natural
edge

Browse: [thekitchendepot.co.uk](https://www.thekitchendepot.co.uk)
Visit: one of our local showrooms



The Kitchen Depot. Family Owned with Family Values

/ A NOTE FROM THE MANAGING DIRECTOR

Welcome to the second edition of “Your Inspiration” by The Kitchen Depot, where you can discover the difference of working with a local, family-owned kitchen retailer.

We understand the value of trust and integrity, whilst delivering exceptional service with a personal touch across our network of showrooms. We pride ourselves on our commitment to excellence, transparency, and integrity in every interaction. From the initial consultation to the final installation, we strive to exceed expectations and deliver results that inspire and delight.

Our team of experienced designers bring a wealth of knowledge and skill to every project. From contemporary chic to timeless elegance, we work closely with our customers to create bespoke kitchens that reflect their individual lifestyles and preferences.

We hope you enjoy this opportunity to be inspired by the hottest trends, our favourite renovations, updates from our showrooms across the UK, and so much more.

Mark McCay



/ SHOWROOM CHEF SCHOOL BORA HOB DEMONSTRATION

Our wonderful showroom staff are more than just kitchen design experts. We recently teamed up with our friends over at BORA to test their fantastic models including the Pure Hob. Chris (Cheltenham), and Graeme (Edinburgh), worked in tandem to make everyone at head office steak baguettes for lunch, while Melissa (Cambuslang), whipped up her “famous” fried eggs. It’s safe to say that no one was left hungry!



/ WHAT'S ON? TEAMING UP WITH QUOOKER

We kicked off the year by launching an exclusive promotion for our customers across the UK. The Kitchen Depot is proud to partner with Quooker, the manufacturers of the “Boiling Water Tap,” a must have accessory for any modern kitchen. For a limited time only, customers who renovated their kitchen with us were eligible to receive a FREE Quooker Flex Tap to put the cherry on top of their fantastic designs.

Pop into your local showroom to discover more about Quooker, and how a hot tap can work within your new kitchen design.



/ INTRODUCING DISCOVERY

This year we’ve had numerous new product launches, including our Discovery range.

In the current marketplace, achieving a stylish, contemporary kitchen can be difficult. Thankfully, we have introduced a brand new range that lets you explore the latest, on-trend décors at an affordable price. From the enticing tones of Reed Green to the calming presence of Denim Blue, Discovery is the answer you’ve been searching for.

Explore more on page 22.



/ HAPPY BIRTHDAY JIM

Our CEO Jim McCay celebrated his 70th Birthday last year. Founded in 2003 by the dynamic duo, Jim and Grace McCay, The Kitchen Depot started as an independent retail venture, firmly rooted in family values. Evolving over the years, the company expanded its horizons and now has over 20 showrooms across the UK.

Pictured above: Jim & Grace McCay, The Kitchen Depot founders on their wedding day.

Happy birthday, Jim!



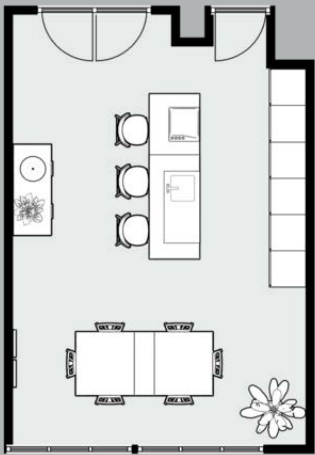
/ OUR RENOVATIONS SETTERFIELD'S KITCHEN

The Setterfield family fell in love with our contemporary LINEA range and designed this incredible kitchen. From its striking Matte Black finish to its meticulously crafted details, this kitchen exudes luxury and refinement. With their new LINEA kitchen, the Setterfield's have transformed their home into a culinary haven where cooking becomes an art form and gathering with loved ones is an unforgettable experience.

LINEA Range

Black

Handleless Rail



/ THE DETAILS

CUSTOMER
The Setterfield Family

SHOWROOM
Hemel Hempstead

KITCHEN RANGE
LINEA

COLOUR
Black

KITCHEN LAYOUT
Open Plan

/ 5-STAR RATING ON TRUSTPILOT

At The Kitchen Depot, we're immensely proud to maintain a stellar 5-star rating on Trustpilot. This esteemed recognition stands as a testament to our unyielding commitment to excellence and customer satisfaction. We take great pride in delivering a high level of service and quality products that exceed our customers' expectations.

From our innovative designs to our seamless installations, every aspect of our work reflects our dedication to craftsmanship and reliability. Each glowing review on Trustpilot reaffirms our position as a leading provider of outstanding kitchen solutions and underscores our unwavering commitment to our valued customers.



500+ Satisfied Customers

Review us on  Trustpilot







Clare Underwood

April 2024 - Ayr Showroom

We did look elsewhere, but **other kitchens were very clearly not of the same quality offered at The Kitchen Depot.** Communication and service was excellent throughout. Allan and the team were very friendly and helpful. We would highly recommend!



Customer

February 2024 - Cambuslang Showroom

Clare was very helpful throughout the design process and **helped us consider things that we had overlooked.** The process was made straightforward aided by the before and after sales service the team. We're very happy with the end result - both with the design and the quality of our fantastic new kitchen.



Marie

March 2024 - Letchworth Showroom

Our new kitchen was planned to maximise much needed storage space, as well as being absolutely beautiful. **Chloe and the team took care of the project throughout the process,** chasing and resolving the inevitable loose ends all projects have. Thank you for all your help!



John Mcquat

March 2024 - Rosyth Showroom

We visited a few kitchen companies but decided to work with The Kitchen Depot Rosyth. Rob and the team were always friendly, **nothing was too much trouble.** The fitting team was excellent, and we managed to have our kitchen fitted before Christmas. Thank you to a brilliant team!



Jennifer Carr

February 2024 - Bishopbriggs Showroom

I recieved an excellent service from start to finish. Jill was very helpful and communicative throughout the whole process. The entire team **couldn't have been more professional and reliable.** I am delighted with my kitchen.



Mrs Russell

February 2024 - Cheltenham Showroom

The service from Chris Rogers and the team was brilliant. **Throughout the process we were kept up to date on what was happening with our kitchen and when.** The pricing was great, we would recommend Chris and his team for anyone looking to refresh their kitchen.



Vivienne Hoskins

December 2023 - Oxford Showroom

We felt very supported throughout the process and the team answered all of our questions and concerns. The **real difference to other suppliers was the personal touch.** literally nothing was too much trouble. We now have a kitchen we absolutely love and spend loads of time in.



Diana Brown

April 2024 - Telford/Shrewsbury Showrooms

If you want a high quality kitchen and installation, go to The Kitchen Depot! Cally listened to what we wanted, and perfectly designed our sophisticated and luxurious kitchen. **We want to thank each member of the team for their enthusiasm during the whole process of our kitchen fitting.**



An Illuminating new idea for kitchen storage



reddot winner 2022

LightTower® is a new larder storage concept featuring hassle-free, no connection illumination using the exceptional AvanTech YOU platform drawer system with several widths to choose from. Just ask in your Kitchen Depot showroom.



Available now in selected
Kitchen Depot stores.
Find Out More



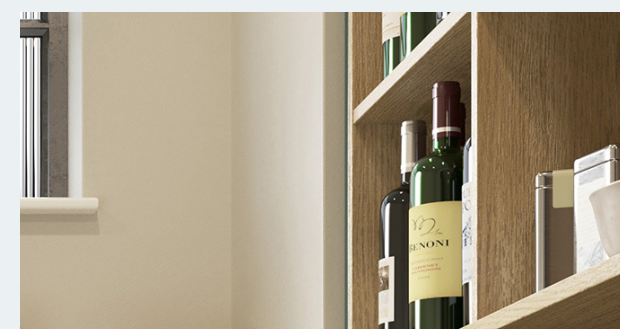
/ KITCHEN STORAGE TIPS THE PERFECT PANTRY

A luxurious kitchen pantry is one of the most sought after features of a modern interior. Easy on the eye, these stylish storage solutions allow you to maximise the space in your kitchen. A few of the benefits include eliminating cluttered shelves, enjoying extra worktop space, and optimising your essentials into one handy space. To achieve the perfect pantry, browse our top storage tips.



/ CONSIDER YOUR NEEDS

First and foremost, it is important to consider your needs when introducing a pantry to your kitchen. Once you have taken these into account, you can start to structure your pantry accordingly. By utilising the typical mix of shelving, drawers, and racks you can tailor the space to cater for ingredients, equipment, and appliances.



/ BENEFITS OF BUTLER

Traditionally, a butler pantry is a smaller area or walk-in space ideal for storage with the capabilities for floor-to-ceiling cabinetry and extra worktop space. With more space, you can optimise the contents of your pantry. Group items together such as spices, equipment, appliances, and arrange in a way that makes them the most accessible.



/ UTILISE DOOR SPACE

Shelving and storage racks can be installed on cabinet doors. Utilise this space for spices, jars etc. as it's convenient to grab when cooking a hearty meal. It is also important to consider the material of your storage solution as they may be suited to holding a more appropriate group of items.



/ PULL OUT VARIATION

A space saving alternative to the traditional kitchen pantry is a pull out storage solution. This allows for easy access to all your items and saves stretching to the back of your cupboards. This LINEA tall gate larder tucks away the contents, while softly gliding open and closed, thanks to the full extension with shock absorption and self-closure feature.



For the second year running, The Kitchen Depot tackled The Glasgow Kiltwalk in aid of The British Heart Foundation! In 2025, the team will do it again!



THE JOURNEY

On Sunday 28th of April 2024 at 10:00am, fourteen wonderful members of The Kitchen Depot family set off from Clydebank on a near 15-mile walk. Equipped with good music, positive mindsets, and plenty of plasters, we embarked on our journey. We passed through Old Kilpatrick, Bowling, Dumbarton, Renton, and Alexandria before crossing the finishing line in beautiful, sunny Balloch.

The feeling we experienced completing our journey was only bettered by the knowledge that we were raising money for a phenomenal cause.



OUR MISSION

After the roaring success of the previous year, we decided that we wanted to do The Kiltwalk all over again - but this time, even bigger and better. Back in 2023, we raised an incredible £1,775 thanks to the support of friends, family, and customers alike.



FUNDRAISING

We are proud to announce we raised **£2,500** in support of the British Heart Foundation.

Thanks to the hard work of our team and the generosity of our donors, this money will aid research into causes and treatment of heart and circulatory disease. Associated illnesses including strokes, vascular dementia and diabetes are also under the BHF microscope.

Thank you to everyone who supported us with their Kiltwalk kindness. See you next year!

Visit www.bhf.org.uk to find out how you can help this incredible charity.





NATURE INSPIRED

Last year, green kitchen décors took off in a huge way. From light, calming tones such as Sage Green to the rich, bold hues of Heritage Green, this diverse colour palette was thoroughly explored in 2024.

In 2025, we expect this design trend to continue with a rise in kitchens inspired by nature. Alongside green cabinetry, we expect to see an increase in the use of indoor plants, floral arrangements, and natural materials across the likes of worktops, flooring etc.

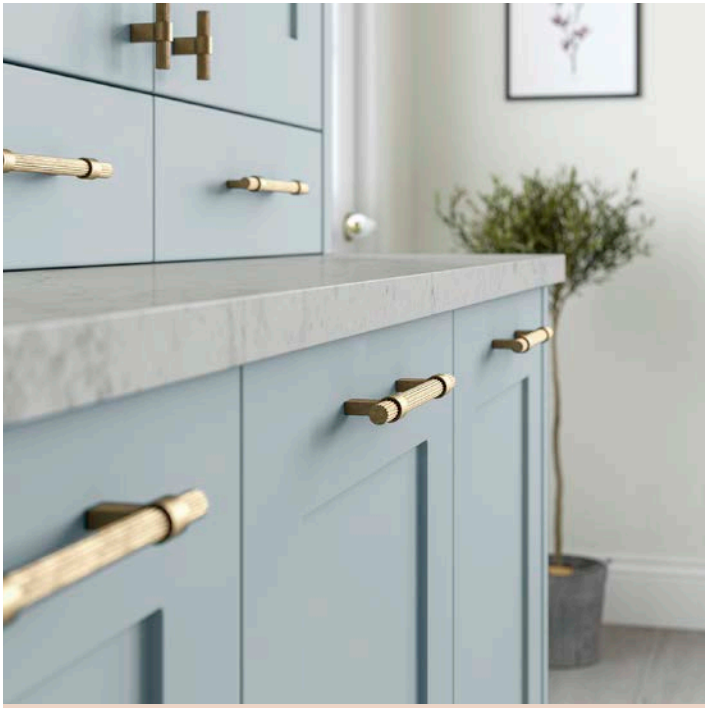
This design, courtesy of our Discovery range, highlights how to perfectly balance elements such as splashes of lavender and wood grain textures with Reed Green doors.



SMART APPLIANCES

Technology is constantly changing how we navigate our lives on a day-to-day basis. In the home, this is no different. There is an incredible selection of smart integrations, ready made for your kitchen, available on the market today.

Smart taps that can dispense boiling, chilled, filtered and even sparkling water on demand have certainly made an impact in recent years. Meanwhile, the latest advances in oven, hob, and fridge manufacturing are set to make your life much easier.



MIDAS TOUCH

Sleek modern or classic shaker? Beautifully bold or stylishly understated? These are some of the big questions you will tackle early on in the design process. When you finally have the answers, you can turn your attention to all the little touches that make your kitchen bespoke to you.

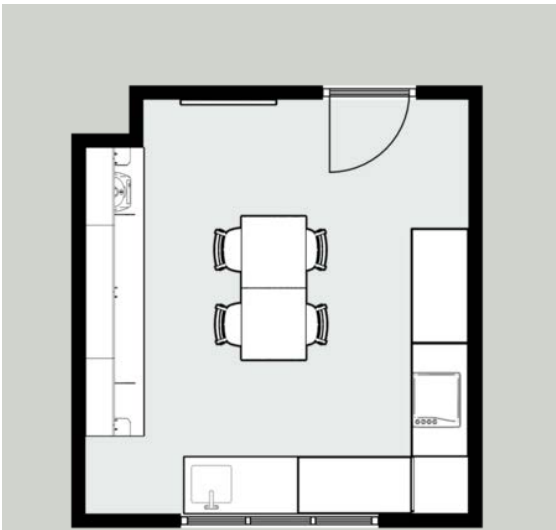
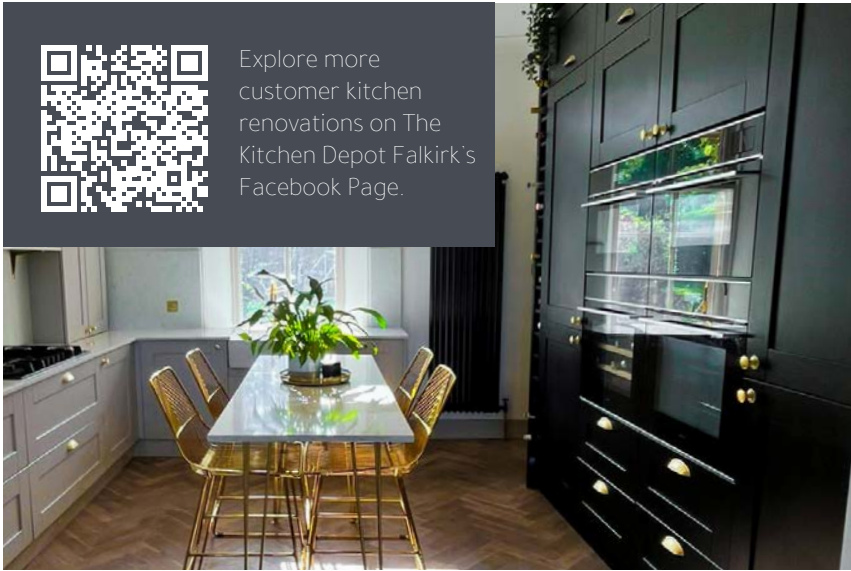
Gold accessories are set to make a big splash in 2025, with more homeowners looking to add a touch of class to their kitchen. The popular combination of gold taps and handles easily elevate any design, regardless of style.



AMBIENT LIGHTING

How you choose to illuminate your space is key to not only enhancing your aesthetics, but creating your desired atmosphere. Under cabinet lighting is perfect for creating a sense of ambience, giving off an inviting glow that is especially desirable during the eventual dark winter nights.

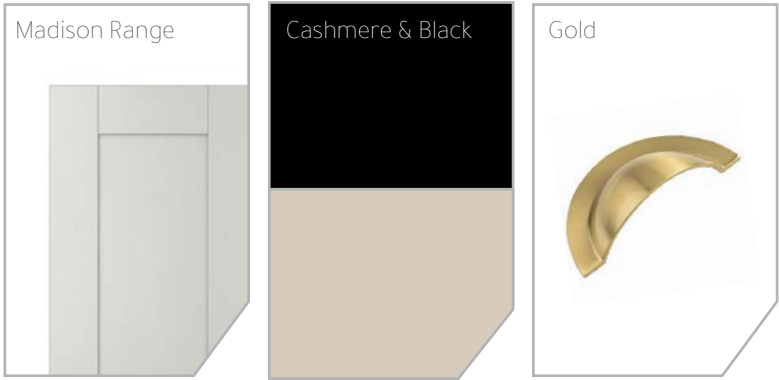
You may also consider looking at smart solutions such as the Lumisonic by ZUMA to seamlessly control both your lighting and sound. The perfect addition to a modern kitchen.



/ OUR RENOVATIONS

M^cCREADIE'S KITCHEN

The M^cCreadie family opted for our Madison shaker door for their incredible dual tone kitchen. They took advantage of our paint-to-order service to pair our elegant Cashmere décor with striking Farrow & Ball Pitch Black on the specially made extra tall units and wine racks. Splashes of Gold enhance this outstanding design while the addition of Cosentino Silestone Lusso worktops and a Quooker tap highlight the impeccable taste of the M^cCreadie family.



/ THE DETAILS

CUSTOMER
The M^cCreadie Family

DESIGNER
Michael - Falkirk

KITCHEN RANGE
Madison

COLOUR
Cashmere & Black

KITCHEN LAYOUT
Open Plan

/ TALL GATE LARDER

This practical pull-out brings out the best in narrow tall cabinets. It offers a space-saving solution which is easily opened with one pull, revealing the entire contents of the cabinet.

/ CORNER CABINET STORAGE

Designed to be versatile for tight corners, this pull-out storage unit caters for demanding spaces. This includes the nooks in old houses and the needs of keen cooks who live with an abundance of ingredients.

/ PULL OUT BINS

Unlike a conventional kitchen bin that sits on your floor, a pull out bin is mounted on a cupboard wall to provide a concealed solution that uses more of the unused space in your kitchen.

/ LARDER PULLOUT AND BASE PULL OUT

The front glides open and closed, silent and easy - thanks in part to the full extension with shock absorption and self-closure. The frame and the front connection are designed in a consistently high-quality, double powder-coated surface.

**/ SMARTER STORAGE
WITH A MODERN KITCHEN**



/ OXFORD SHOWROOM
CHEESE AND WINE NIGHT

On a warm summer's evening, Chris and the Oxford team threw a classy cheese and wine night for their customers. This open event gave customers the chance to chat with architects, builders, and designers, building relationships with the folks who would be handling their kitchen makeovers.

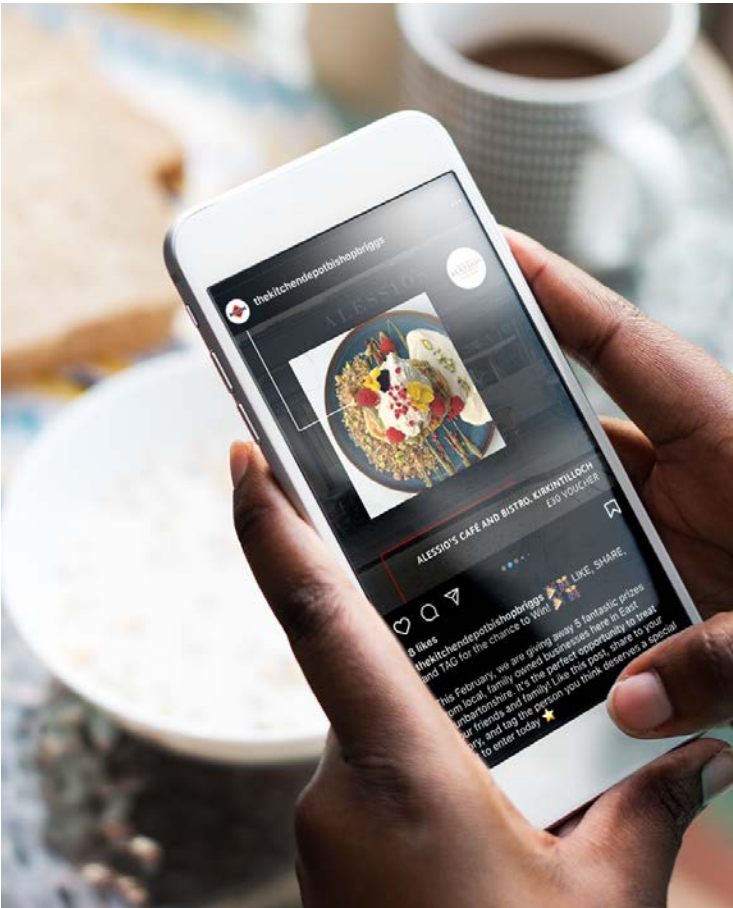
It was a blast; everyone loved the cheese and wine from a local delicatessen and wine shop. Guests found it super helpful and said it really got their projects off to a great start with all the right people there to lend a hand.



Our showrooms are run by local families who love to give back to their communities.

This past February, The Kitchen Depot Bishopbriggs ran a fantastic giveaway across social media. Five lucky winners were the recipients of a wonderful prize supplied by local businesses. These included a voucher for an Indian restaurant, a florist, and a cosmetic beauty treatment.

Congratulations to the winners, enjoy your prizes!



/ EDINBURGH SHOWROOM
FOOTBALL CLUB SPONSORSHIP

The Kitchen Depot Edinburgh have sponsored football kits for the Edinburgh South Soccer School.

The Soccer School is a free initiative running every Saturday, supporting kids of all ages in the South East side of Edinburgh. The charity based club has been running since 1969 with over 75 teams.

Congratulations, and best of luck to Edinburgh South.



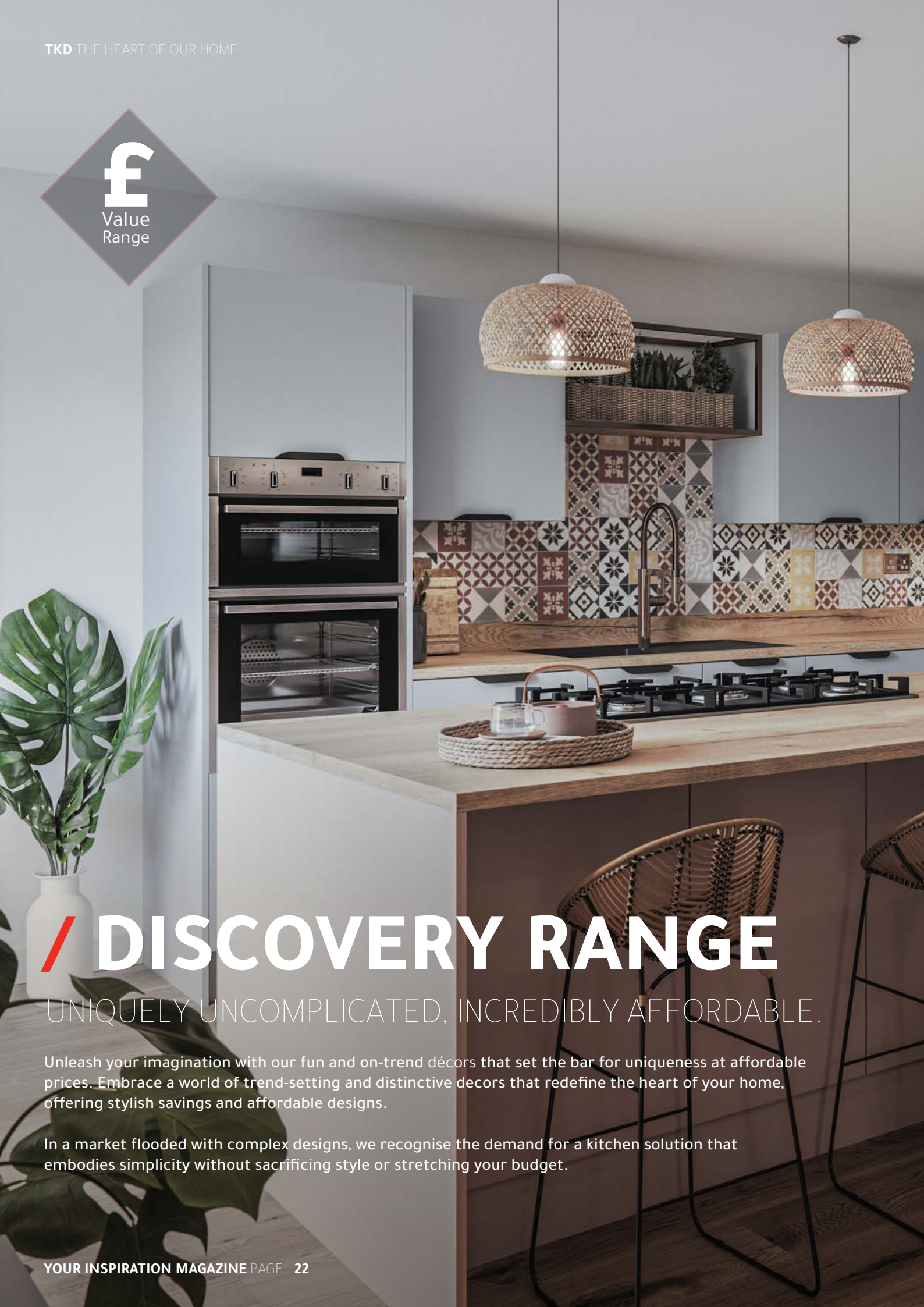
/ ROSYTH SHOWROOM
2nd BIRTHDAY CELEBRATION

Earlier this year, we celebrated the second anniversary of The Kitchen Depot Rosyth.

Rob and Eilidh Graham threw a birthday party at the showroom to mark the occasion and reflected on their experience so far: "Since we opened our doors, we have had the pleasure of supplying and installing many quality kitchens in wonderful homes across Fife and the Central Belt."

Congratulations to a fantastic pair, we can't wait to see what the future holds at The Kitchen Depot Rosyth!





/ DISCOVERY RANGE

UNIQUELY UNCOMPLICATED, INCREDIBLY AFFORDABLE.

Unleash your imagination with our fun and on-trend décors that set the bar for uniqueness at affordable prices. Embrace a world of trend-setting and distinctive decors that redefine the heart of your home, offering stylish savings and affordable designs.

In a market flooded with complex designs, we recognise the demand for a kitchen solution that embodies simplicity without sacrificing style or stretching your budget.



/ AVAILABLE DÉCORS

	White
	Light Grey
	Taupe Green
	Dust Grey
	Reed Green
	Sage Green
	Denim Blue
	Sand Yellow
	Antique Rose
	Rusty Red



Scan to explore all that our
Discovery range has to offer.

[thekitchendepot.co.uk](https://www.thekitchendepot.co.uk)

/ WHY CHOOSE DISCOVERY?

- + Budget-friendly, where quality meets affordability
- + Trendsetting unique décors
- + Matching interior cabinet colour
- + Doors & cabinets all made in the UK
- + Excellent value for money





/ WHAT YOUR FAVOURITE
KITCHEN COLOUR SAYS ABOUT YOU

Have you ever found yourself curious about the subtle messages conveyed by your favourite kitchen colour? Delve into the intriguing insights provided by our team of expert designers as they unveil what your colour choice might reveal about your personality and style preferences.

/ WONDERFUL WHITE
Zara Handleless Matte White

For a long time, white was one of the most popular décors in all of kitchen design. Not only does it make your environment appear clean and bright but it also helps create the illusion of space.

If you're a fan of white kitchens then it can be said that you're attracted to minimalism and value an interior that is easy to maintain.



/ GLORIOUS GREEN
Camden Fir Green

Green has emerged as one of the trendiest choices for kitchen colour schemes in the 2020s. Delving into the lush variety of tones within the green palette unlocks a range of aesthetic potential. From the profound depths of Deep Forest, to the invigorating brightness of Citrus, each shade embodies the natural essence of green in its own unique way.

Green kitchen lovers have been known to have a strong connection to nature, prioritise health, and seek a living environment that radiates positivity.



/ BRILLIANT BLUE
Georgina Slate Blue

Blue is a diverse colour that works across so many different styles of kitchen. There are a variety of blue décors that are suitable for both classic shaker and modern slab door styles, from smart Indigo to playful Pantry Blue.

If your favourite kitchen colour is blue then you could be a relaxed, mature individual seeking a perfectly balanced design.

/ PICTURESQUE PINK
Madison Vintage Pink

Pink is really catching on as one of kitchen designs more adventurous options. Not only does this décor really pop from an aesthetic point of view, but pink is very uplifting thus creating a welcoming environment.

The owner of a pink kitchen can be described as being in touch with their femininity while seeking a nurturing, warm space that encapsulates their personality.



/ BOLD BLACK
Linea Matte Black

Darker kitchen décors such as black and graphite grey are associated with being modern and sophisticated. These designs often require a spacious environment with plenty of access to natural lighting to ensure they aren't overwhelming or oppressive.

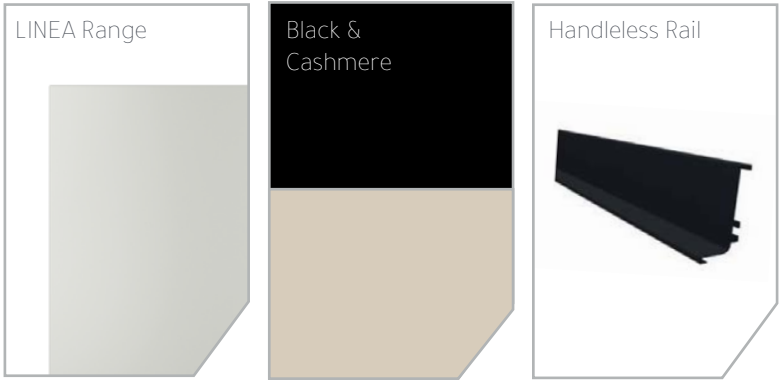
Many believe that black kitchens are a little daring and present quite striking visuals, however, that may just suit your personality. Homeowners that opt for a dark design are often bold, confident, and have a flair for the dramatic.



/ OUR RENOVATIONS

DAWKINS' KITCHEN

The Dawkins' stylish design features our LINEA collection in Black alongside complimentary Cashmere creating the perfect dual tone effect. The splashes of more vibrant, warmer colours on the walls and accessories add a new dimension to this design while the Dawkins' fantastic use of light across shelving brings an air of sophistication to an already inspired design.



/ THE DETAILS

CUSTOMER
The Dawkins Family

SHOWROOM
Hemel Hempstead

KITCHEN RANGE
LINEA

COLOUR
Black & Cashmere

KITCHEN LAYOUT
Open Plan with an Island



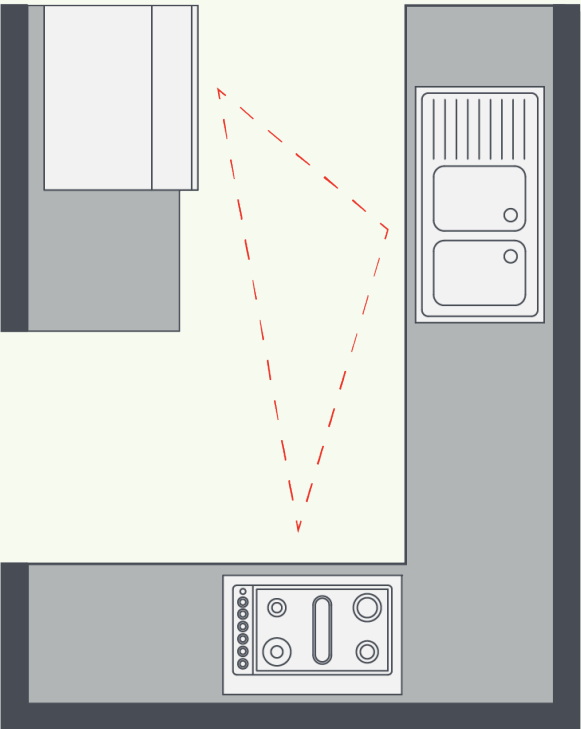
/ WHAT IS THE GOLDEN TRIANGLE?

KITCHEN DESIGN TIPS

The Golden Triangle refers to a kitchen appliance layout principle that advocates dividing your space into three core working areas. Your sink, fridge, and hob should be carefully placed to form a triangle in your kitchen. Often referred to as The Kitchen Triangle, this concept was developed in 1940s as a cost cutting measure and has played a major role in kitchen design over the years.

WHAT IS IT'S PURPOSE?

The purpose of the Golden Triangle is to allow you to undertake any task without facing obstruction. Cooking, storing, and cleaning is in theory quicker and easier. Regardless of your standing, the triangle formation offers an easy route to each key appliance, maximising efficiency.



Winchester in Taupe and Willow



DO OUR DESIGNERS USE IT?

At The Kitchen Depot, our designers take into account the core principles of the Golden Triangle when designing, to ensure that each kitchen is functional and stylish. The rise in popularity of open-plan living, multi-functional space and smarter storage allows our designers to unleash their creativity and use the triangle principles to create something truly beautiful.

Visit your local showroom today for more information.



/ PAINT-TO-ORDER

AVAILABLE SELECTION

We offer a wide range of décors in our paint-to-order service. Browse our extensive palette below to find the colour that's just right for you. Ask our expert designers for advice on our selection and they'll be happy to help you in store.

WHITES / CREAMS	BIEGES	BLUES
<div>White</div>	<div>Shell</div>	<div>Pantry Blue</div>
<div>Porcelain</div>	<div>Taupe Grey</div>	<div>Airforce</div>
<div>Ivory</div>	<div>Mussel</div>	<div>Parisian Blue</div>
	<div>Stone</div>	<div>Marine</div>
	<div>Stone Grey</div>	<div>Slate Blue</div>
	<div>Lava</div>	<div>Indigo</div>
GREENS	GREYS	PINKS/PURPLES
<div>Light Teal</div>	<div>Light Grey</div>	<div>Cashmere</div>
<div>Viridian</div>	<div>Dust Grey</div>	<div>Vintage Pink</div>
<div>Sage Green</div>	<div>Monument Grey</div>	<div>Antique Red</div>
<div>Cardamom</div>	<div>Gun Metal Grey</div>	
<div>Reed Green</div>	<div>Graphite</div>	
<div>Willow</div>	<div>Cannon Black</div>	
<div>Heritage Green</div>		
<div>Deep Forest</div>		



/ OUR HANDLE COLLECTION

Our suite of handles has been carefully chosen to compliment a range of styles. Discover more of our selection in your local showroom.

<div>K1-379 BAR HANDLE CHROME 160mm Square Bar Handle</div>	<div>K1-309 KNOB CHROME 32mm Square Knob</div>	<div>K1-244 TRIM HANDLE CHROME 320mm Trim, Rear Fixed</div>	<div>K1-312 KNOB CHROME Knob on backplate</div>
<div>K1-265 D-HANDLE ANTIQUE COPPER 160mm Rounded D-handle</div>	<div>K1-262 KNOB ANTIQUE COPPER 59mm Rectangular Knob</div>	<div>K1-271 CUP ANTIQUE COPPER 96mm Round Cup</div>	<div>K1-268 KNOB ANTIQUE COPPER 38mm Round Knob</div>
<div>K1-304 CUP BRUSHED SATIN BRASS 128mm Elongated Cup</div>	<div>K1-301 KNOB BRUSHED SATIN BRASS 32mm Round Knob</div>	<div>K1-352 BAR HANDLE BRUSHED BRASS 160mm Bar Handle</div>	<div>K1-363 T-BAR BRUSHED BRASS 60mm Knurled T-bar</div>
<div>K1-355 T-BAR BRUSHED MATTE BLACK 32mm T-bar</div>	<div>K1-382 T-BAR MATTE BLACK 60mm Square T-bar</div>	<div>K1-321 BAR HANDLE BRUSHED NICKEL 128mm Bar Handle</div>	<div>K1-323 CUP BRUSHED NICKEL 64mm Round Cup</div>



/ TRY OUR ONLINE KITCHEN PLANNER

READY TO START PLANNING YOUR DREAM KITCHEN?

Create your kitchen plan using our online kitchen planner and free kitchen design tool. The 3D Design Software creates beautiful kitchen images and is super simple to use. Visualise your kitchen design and plan your layout easily.

HOW TO USE OUR KITCHEN DESIGN TOOL

Kickstart your kitchen planning by getting creative with your very own DIY kitchen planner.

/ CHOOSE YOUR KITCHEN STYLE

Modern or Traditional

/ CHOOSE YOUR PREFERRED DOOR STYLE

We have a wide range to choose from
Slab / J-Handle / Shaker

/ CHOOSE THE DÉCOR AND COLOUR OPTIONS

Here you can select the colour or décor you would like your doors to be and if you would like to see the doors with handles or in a handleless style on your finished kitchen layout.

/ ROOM CHANGES

You can change the colour of the walls and flooring style to match your style and taste easily.

/ SAVE AND SEND

Save your visuals and send them to your designer ahead of your appointment or print them off and bring them with you. Your kitchen designer will use the visuals and your measurements as a starting point for your design. They will offer advice and create numerous visuals and floor layouts during your design appointment using our CAD software.



Scan to get started designing your dream kitchen.

www.thekitchendepot.co.uk/kitchen-planner





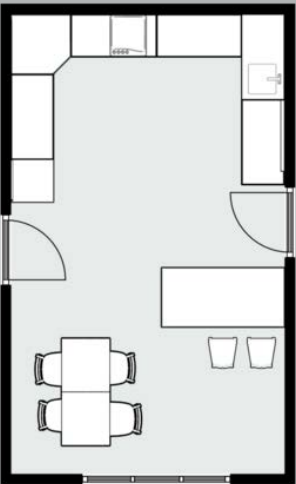
Explore more customer kitchen renovations on The Kitchen Depot Rosyth's Facebook Page.



/ OUR RENOVATIONS

O'HARA'S KITCHEN

Our popular Kendal shaker looks stunningly modern in the O'Hara's new kitchen. The pairing of Heritage Green and Porcelain is inspired, while brass handles compliment the rich texture of the doors perfectly. Features such as a bespoke pantry and peninsula dining area maximise the potential of the space. This kitchen embodies the perfect harmony between functional and stylish.



/ THE DETAILS

CUSTOMER
The O'Hara Family

SHOWROOM
Rosyth

KITCHEN RANGE
Kendal

COLOUR
Heritage Green & Porcelain

KITCHEN LAYOUT
Open Plan

/ PROUDLY MANUFACTURED
IN SCOTLAND FOR 20+ YEARS

We offer so many benefits from our kitchen manufacturing expertise, using a higher specification of materials as standard. While combining the best attributes of the global market leaders, we are proud to incorporate Italian design and German engineering into our products made right here in the UK.

Every kitchen is individually made to your exact specification.



HOW DOES THE PROCESS WORK?

Our process begins with cutting our raw materials, they are then edged, bored, built, cleaned, and wrapped for distribution.

- + Raw Material Sourced
- + Cutting
- + Edging & Bonding
- + Boring
- + Building Cabinets
- + Final Quality Check
- + Packaged & sent to Distribution
- + Delivery



MEET GRAEME,
MANUFACTURING MANAGER

Graeme has worked at The Kitchen Depot for 9 years, and possesses an unparalleled knowledge of our product and services. We caught up with him to go over some of our most common FAQs regarding manufacturing.



WHAT ABOUT THE ENVIRONMENT?

The Kitchen Depot takes the same consideration and care into our impact on the environment that we do when designing our customers dream kitchens.

We are committed to sustainable business practices and are always looking at new ways to reduce our carbon footprint.



WHERE ARE THE KITCHENS MADE?

All our kitchens are made in our state of the art manufacturing plant, located in Glasgow. We pride ourselves on our team of highly skilled machinists who play crucial roles at every stage of the kitchen manufacturing process. Their dedication and expertise shine through in every aspect, showcasing true craftsmanship that embodies the essence of home-built quality.

From precision cutting to meticulous assembly, each step is handled with care and attention to detail. This ensures that every kitchen that leaves the facility is not just a product, but a testament to the artistry and skill of its creators.

Did you know that we offer customers guided tours of our manufacturing plant? **Book an appointment at our Hillington showroom and request a tour today!**

T: 0141 891 4884 E: info@thekitchendepot.co.uk



/ Local Communities

We support our local communities by donating ex kitchen displays, so that every kitchen manufactured can fulfil a lifetime purpose and help those in need.

Our charities include; Cash For Kids, Golden Circle, Bright Star Boxing Academy & Macmillan Cancer Support.



/ Recycling

We work with EGGER, one of the UK's largest users of recycled wood in the industry. 40% of an EGGER chipboard panel is made using recycled wood and this is our main source of raw materials.

We recycle our off -cuts and bi products from production, EGGER then converts heat into green electricity in their biomass power plants. The biomass and wood residues can no longer be used as materials in production.

/ Responsible Sourcing

Our raw materials are sustainably sourced from PEFC and FSC accredited forests. All boards are 100% recyclable and carbon negative.

Working with EGGER, all of our wood is sourced locally with a focus on the future of forestry to guarantee supply for generations to come.

Environmentally friendly PUR glue is used in our edging and bonding process.



/ THE GREAT TKD BAKE OFF

JUNE'S GIN AND TONIC CUPCAKES

Our resident **Queen of the Kitchen**, **June Colquhoun** has the perfect recipe for a *flavourable* treat that can be created in less than an hour.



Happy baking!
- June x

/ METHOD

Cupcakes

1. Heat your oven to 180/160°C fan and prep 12 cases.
2. Beat the butter with the caster sugar until light and fluffy.
3. Add the eggs and flour and mix again.
4. Add in the gin, and the tonic, and then beat again.
5. Spoon the mix into the cupcake cases evenly and bake in the oven for 18-20 minutes and then leave them to cool fully on a wire rack.

Gin Syrup

1. Add the sugar, gin and tonic to a pan on boil for a minute so the sugar dissolves. Brush this mixture over the baked cupcakes.

Buttercream

1. Beat the butter with an electric mixer for a couple of minutes to loosen it - gradually beat in the icing sugar until well combined (this can take up to 5 minutes).
2. Add in the gin and tonic, one tablespoon of each at a time, and beat fully each time.

Decoration

1. Once iced, add a lime or lemon slice to the cupcake, and add part of a straw for show. Sprinkle on some lime/lemon zest and enjoy!

/ INGREDIENTS

CUPCAKES

- + 150g unsalted butter/baking spread
- + 150g caster sugar
- + 3 medium eggs
- + 200g self raising flour
- + 3 tbsps gin
- + 3 tbsps tonic

GIN SYRUP

- + 50g caster sugar
- + 3 tbsps gin
- + 3 tbsps tonic water

BUTTERCREAM

- + 150g unsalted butter
- + 375g icing sugar
- + 3 tbsps gin
- + 2-3 tbsps tonic

DECORATION

- + Lime zest
- + Lime slices

THE ONLY KITCHEN FRANCHISE NETWORK TO MANUFACTURE IN THE UK

— INTERESTED IN BECOMING A FRANCHISEE? —



Strong Return on Investment with Great Sales Results

Our proven business model ensures that your efforts translate into tangible financial rewards, setting you on the path to long-term success.



Competitive Start-Up Cost

Enjoy the benefits of entrepreneurship without the burden of excessive initial expenses.



UK Manufactured

Delight your customers with products proudly manufactured in the UK, synonymous with quality, reliability, and craftsmanship.



Unrivalled Support and Training

From initial setup to ongoing operations, our dedicated team is committed to your success, providing guidance, resources, and mentorship.



Customers Love Our Products and Service

4.8 Stars and 500+ Reviews ★★★★★

Gain a competitive edge with a sterling reputation for excellence. Our products and service consistently earn high praise from satisfied customers, reflected in our exceptional rating and numerous glowing reviews on Trustpilot.

INTERESTED IN JOINING THE KITCHEN DEPOT'S JOURNEY?

— GET IN TOUCH —



Graham Bucktrout - Franchise Director

T: 07717 596189

E: graham.bucktrout@thekitchendepot.co.uk

thekitchendepot.co.uk





thekitchendepot.co.uk