

**The Kitchen Depot**  
Made For A Lifetime

# YOUR INSPIRATION

**FIND YOUR KITCHEN  
PERSONALITY**

**SMART IDEAS  
FOR BUSY LIVES**

**CUSTOMER  
RENOVATIONS**

Discover the style that suits your space - and make it your own.

From family-friendly layouts to time-saving taps - your expert guide is here.

Take a tour through our stunning customer renovations.



Unleash your imagination with our fun and on-trend décors that set the bar for uniqueness at affordable prices. Embrace a world of trend-setting and distinctive décors that redefine the heart of your home, offering stylishly affordable designs.

In a market flooded with complex designs, we recognise the demand for a kitchen solution that embodies simplicity without sacrificing style or budget.

# / CONTENTS PAGE

## WELCOME EVERYONE

### THE HEART OF OUR HOME

What's On?.....	4
Charity Begins At Home.....	12
Welcome To The Family.....	20
June's No Bake Cheesecakes.....	29
Ask The Expert.....	36

### INSPIRING CUSTOMER KITCHEN RENOVATIONS

Voss' Kitchen.....	6
Phelp's Kitchen.....	16
M°Quat's Kitchen.....	26
Slattery's Kitchen.....	34

### IDEAS, INSPIRATION, INSIGHT

Find Your Kitchen Personality.....	8
Top 4 Kitchen Tips for Busy Parents.....	11
Our Expert Guide to Kitchen Worktop Materials.....	14
Choosing a Sink & Tap.....	24
Zuma Sound & Lighting System.....	28
Notes & Ideas.....	38

### EXPLORE OUR OFFERING

Download Our Brochures.....	18
Natural Edge Range.....	22
Paint-To-Order.....	30
Our Handles Collection.....	31
Try Our Online 3D Design Planner.....	32



discovery.

Browse: [thekitchendepot.co.uk](https://www.thekitchendepot.co.uk)  
Visit: one of our local showrooms



The Kitchen Depot. Family Owned with Family Values



# / A NOTE FROM THE MANAGING DIRECTOR

We're delighted to bring you the latest edition of *Your Inspiration*, where you'll discover what sets The Kitchen Depot apart as a trusted, family-owned kitchen specialist with a growing presence across the UK.

At The Kitchen Depot, we're passionate about creating beautifully crafted kitchens that are built around real lives. As a family-run business, we combine traditional values with modern design and manufacturing, offering high-quality, made-to-measure kitchens with a personal touch.

Whether you're visiting an established store or stepping into one of our brand-new showrooms, our focus on quality, integrity, and exceptional design remains at the heart of everything we do.

In this edition you'll find inspiration from recent renovations, insight into the latest kitchen trends, and stories from across our showrooms. We hope you enjoy every page—and feel inspired to create a kitchen that's truly yours.

Mark McCay



# / 10 YEAR ANNIVERSARY OF OUR EAST KILBRIDE SHOWROOM

To commemorate the 10 year anniversary of The Kitchen Depot East Kilbride, the team hosted a special celebration at the showroom. Visitors joined for a fantastic weekend filled with drinks, delicious food, and fun activities for the whole family. We even gave away some exciting prizes to mark the occasion!

Here's to another fantastic 10 years delivering high-quality kitchens to families across the community.



# / WHAT'S ON? SHREWSBURY FOOD FESTIVAL

We had an incredible time at this year's Shrewsbury Food Festival, where The Kitchen Depot proudly sponsored the Kids Cookalong—a fantastic, hands-on experience that got little chefs creating big flavours! Alongside the cookalong, we gave away some brilliant prizes, including a Ninja Slushie Maker and Baridi Beer Machine.

But the highlight for us? Connecting with the local community. From sharing kitchen tips to chatting with visitors about their home renovation plans, it was a brilliant opportunity to expand our presence and showcase what The Kitchen Depot is all about - family, quality, and kitchens that bring people together.



# / TECHNOLOGICAL TRENDS

At The Kitchen Depot, innovation is at the heart of what we do. Recently, our Research and Development team attended the Interzum exhibition in Germany, one of the world's leading events for interior design and kitchen manufacturing.

Keeping up with technological trends ensures that every kitchen we deliver is not only beautifully designed, but also built with the latest advancements in durability, sustainability, and functionality—making your kitchen work harder, smarter, and longer.



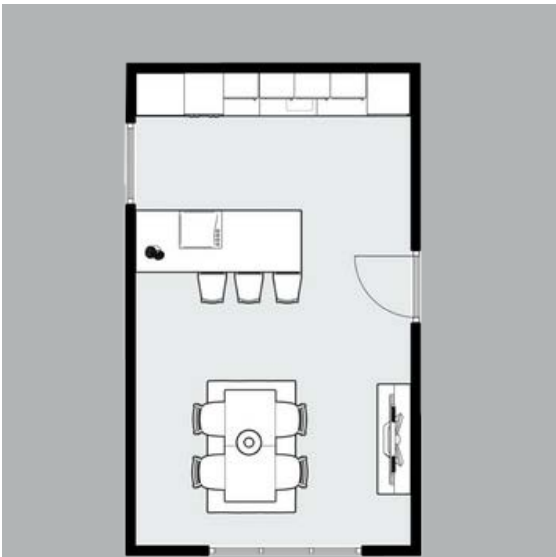
# / HAPPY BIRTHDAY, GRACE

Our company co-founder, Grace McCay, celebrated her 70<sup>th</sup> birthday surrounded by family and friends. Her commitment to excellence and personal touch has set The Kitchen Depot apart, ensuring that every kitchen is not just functional but a true reflection of the families who used them. Our family owned, with family values ethos began with Grace and still continues to this day.

Happy birthday, Grace!

Pictured above: The McCay family celebrations.

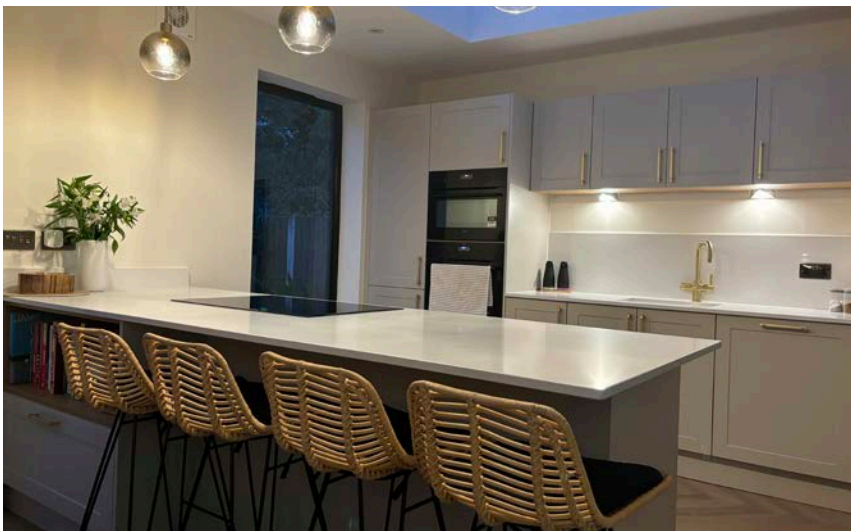
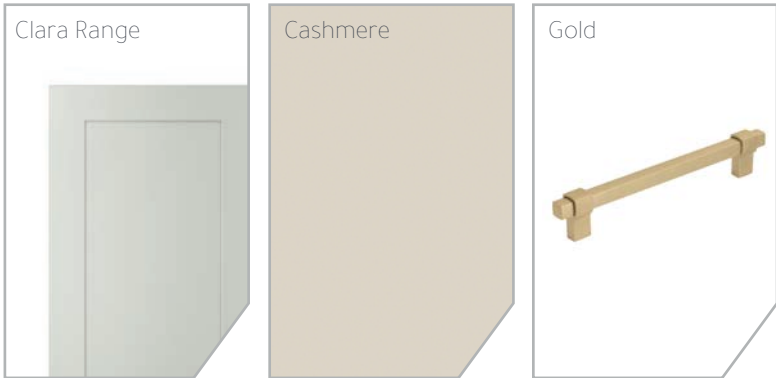




## / OUR RENOVATIONS

### VOSS' KITCHEN

The Voss family's stunning new kitchen, crafted by The Kitchen Depot in Telford, perfectly blends timeless style with modern luxury. Designed in the elegant Clara range, the space features cashmere shaker doors accented by sophisticated gold handles, creating a warm and refined atmosphere. Thoughtfully planned and beautifully executed, this kitchen is a true heart of the home.



## / THE DETAILS

**CUSTOMER**  
The Voss Family

**SHOWROOM**  
Telford

**KITCHEN RANGE**  
Clara

**COLOUR**  
Cashmere

**KITCHEN LAYOUT**  
Open Plan w/ Island



/ FIND YOUR

KITCHEN PERSONALITY

Whether you're hosting Sunday brunch, juggling homework at the island, or winding down with a cup of tea, the style of your kitchen doors helps set the tone. From sleek and modern to warm and rustic, there's a door range to match every personality and every home. Here are some of our most-loved looks - where will you see yourself?



Charming. Adaptable. Always in style.

THE TIMELESS HOST

BALMORAL | KENDAL

Classic shaker doors never go out of style. With their framed detailing, classic feel wood grained finishes, and timeless design, they're ideal for sociable spaces with a warm, lived-in feel.

Porcelain

Taupe Grey

Light Grey

Indigo

Reed Green

THE MODERNIST

ZARA MATTE | SIENNA GLOSS

Think clean lines, handleless fronts, and high-gloss or soft-touch surfaces. This range suits those who like things crisp, contemporary, and clutter-free – with finishes that resist discolouration and use the same durable, high-gloss paint found on cars for a sleek, long-lasting look.

White

Light Grey

Dust Grey

Graphite

Cashmere

Sleek design. Smart function. Minimal effort.

Soft tones. Subtle textures. Effortlessly calm.

THE NATURAL SOUL

JAMISON | ASHTON

These solid wood doors offer timeless character and lasting quality. They're perfect for laid-back, organic spaces where family and friends naturally gather. Crafted from high-quality wood, each door is unique – rich in texture, durable in use, and built to last. For more information, ask in-store about our Natural Edge range.

Shell

Mussel

Pantry Blue

Viridian

Sanded Ash

THE URBAN CREATIVE

LINEA | ZARA TEXTURE

Rich, bold colours meet tactile finishes in this design-forward range. It's for those who aren't afraid to make a statement and want their kitchen to be anything but ordinary.

Parisian Blue

Fir Green

Natural Hamilton Oak

Pewter Halifax Oak

Grey Brown Whiteriver Oak

Colourful confidence. Designed to stand out.





## The new BORA X Pure Rough

Maximum cooking space with surface induction, embedded in a black, purist design.  
Simpler cooking experiences thanks to connection with the BORA JOY app and BORA Assist functions.  
Exclusively available as BORA X Pure Rough with matt glass ceramic.

**BORA** cooktop extractor systems

[bora.com](https://bora.com)



## / TOP 4 KITCHEN TIPS FOR BUSY PARENTS

Between work deadlines, school runs, and bedtime routines, the kitchen often becomes the command centre of family life. But when time is short and energy is low, the right setup - and a few smart habits - can make all the difference. Here are our top tips to help working parents create a kitchen that supports their busy lifestyle.



### / PRIORITISE SMART STORAGE

Maximise every inch of your kitchen with clever storage solutions that make life easier. Deep drawers for pans, pull-out larders, and corner units with swing-out shelving help reduce rummaging and save time when cooking. Labelled containers for kids' snacks, packed lunch zones, and breakfast stations make mornings smoother.



### / CHOOSE EASY-CLEAN FINISHES

Look for worktops, doors, and flooring that wipe down in seconds. Matte finishes help disguise fingerprints, while durable laminates and quartz surfaces resist spills and stains. Integrated bins and splashbacks also cut down cleaning time. We have a wide range available to make your lifestyle that little bit easier. Visit our showrooms today for a kitchen that works as hard as you do.



### / EMBRACE FAMILY-FRIENDLY LAYOUTS

If you're planning a new kitchen, think beyond aesthetics. U-shaped and L-shaped layouts with a clear 'working triangle' between the hob, sink, and fridge streamline movement while cooking. Consider a breakfast bar or island seating to keep little ones nearby while you prep meals or answer emails.



### / DESIGNATE A DROP ZONE

Busy homes need structure. A bench with hooks for bags and jackets, a tray for keys, and a calendar or charging station keeps everyone on track - and clutter off your worktops. At the end of the day, your kitchen should work for you. Whether you're prepping packed lunches or catching up on emails at the island with a coffee, the right space helps make busy days feel more manageable.



# / CHARITY BEGINS AT HOME

At The Kitchen Depot, family values are at the heart of everything we do - not just in our kitchens, but in how we support one another and give back. Whether it's raising funds for vital causes or helping our local communities, our teams across the UK have shown incredible commitment, compassion, and team spirit.

Take a look at just some of the incredible charitable stories from our network - each one a reflection of our shared values and passion for making a difference.



## / KICKING FOR A CAUSE CHARITY FOOTBALL MATCH

Eight members of our Glasgow team laced up their boots and took part in a spirited charity football match - bringing energy, teamwork, and a whole lot of heart to the event. Not only did they show up for a fantastic cause, but they also brought home a well-earned win!

The match helped raise vital funds to support young patients and their families at the Glasgow Children's Hospital, and we're honoured to have played a small part in making a difference.



## / WHITE WATER CHALLENGE DUMBARTON'S BRAVE EFFORT

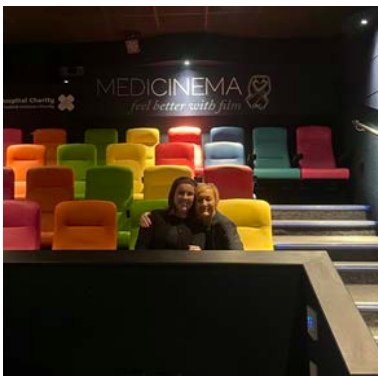
Taking fundraising to the next level (and the rapids), our adventurous Dumbarton team dived headfirst into a white water rafting challenge in support of Beatson Cancer Charity.

With courage, camaraderie, and a splash of humour, they raised £583 for a cause that provides essential care and support for cancer patients across Scotland.

Congratulations to the team at Dumbarton!

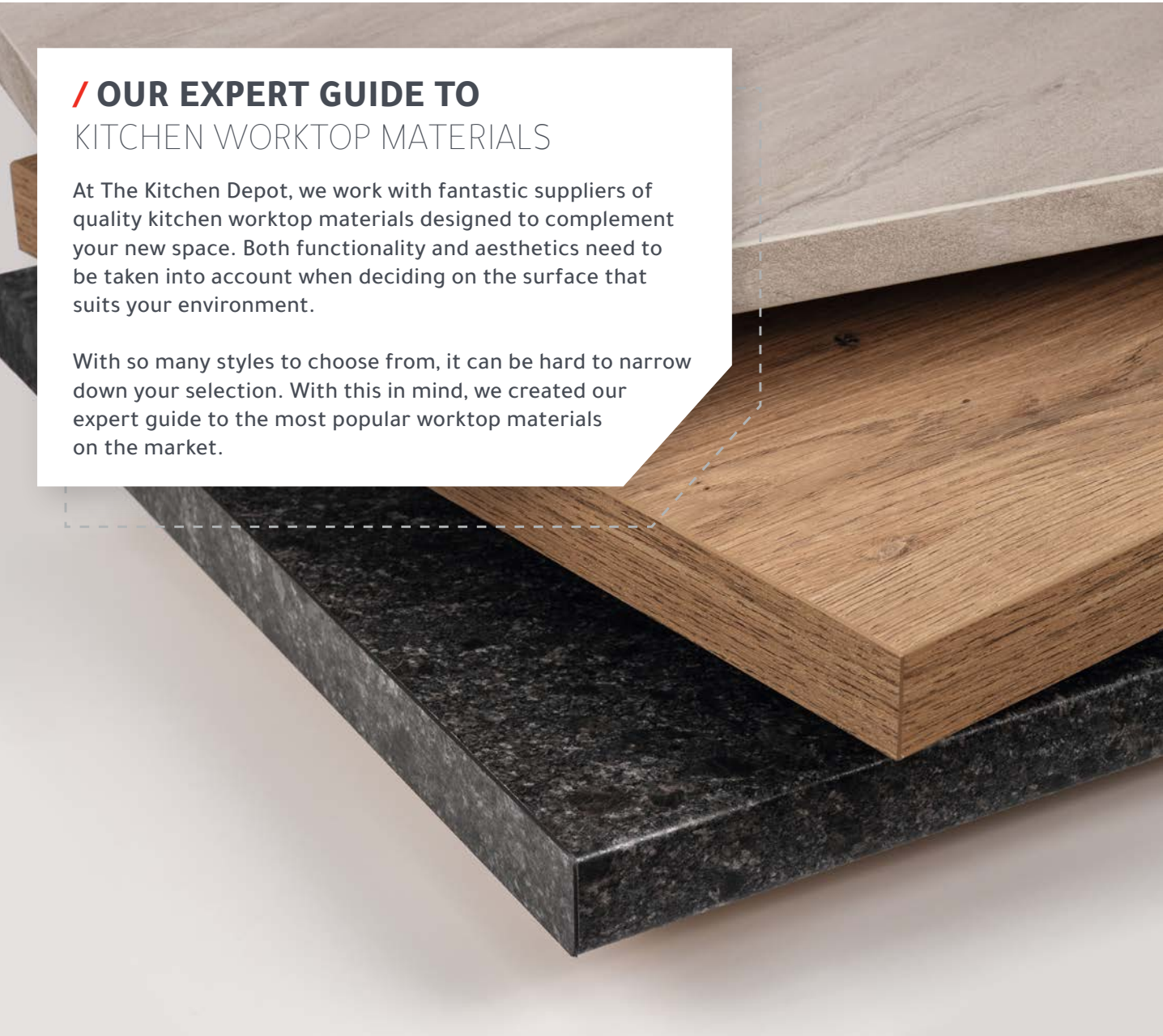


## / SPREADING SMILES KIDS HOSPITAL FUNDRAISING



Members of our team raised funds for the Royal Hospital for Children, using the donations to purchase pyjamas, arts and crafts supplies, and cuddly toys for the young patients. The team visited to deliver the gifts and were given a tour by Lucy from the Glasgow Children's Hospital Charity, who showcased the incredible work being done to support children and families during challenging times. The charity plays a vital role in funding life-enhancing equipment, play programmes, and family services.





**/ OUR EXPERT GUIDE TO**  
KITCHEN WORKTOP MATERIALS

At The Kitchen Depot, we work with fantastic suppliers of quality kitchen worktop materials designed to complement your new space. Both functionality and aesthetics need to be taken into account when deciding on the surface that suits your environment.

With so many styles to choose from, it can be hard to narrow down your selection. With this in mind, we created our expert guide to the most popular worktop materials on the market.



PORCELAIN WORKTOPS

Porcelain worktops are one of the most premium surfaces available for modern kitchens. Sleek and luxurious, they make a bold, contemporary statement and can significantly enhance the overall value of your home. Sitting at a higher price point than Quartz, Porcelain is a considered investment.

While there are some more cost-effective options on the market, Porcelain generally commands a premium due to its advanced manufacturing process and superior heat and stain resistance. With proper care, these worktops can last for years, making them a smart long-term choice.



GRANITE WORKTOPS

Granite is a great natural material that offers stylish worktops with unique beauty and rich colours palettes. They say that no two pieces of Granite are the same, with the veining differing from surface to surface.

If you are seeking a kitchen worktop with longevity at a mid-to-high level price point then Granite could be for you. Like Quartz, a Granite surface is durable with scratch, stain, and even heat resistant properties. It's also an ideal place to prepare food as it's easy to clean, hygienic, and naturally cool.



LAMINATE WORKTOPS

A kitchen worktop material that can help you achieve your desired look without the high-end costs is Laminate. As a man-made material, Laminate offers a wide range of colours, finishes, and even thicknesses – allowing you to tailor the look and feel of your kitchen, whether you prefer a slim, modern profile or a chunkier, traditional style.

Laminate worktops are versatile and the most affordable on the market today. Like the aforementioned materials, Laminate possesses antibacterial properties and is highly durable, making it a great choice for busy families when you factor in the low cost as well. They are also water-resistant and can be easily repaired by comparison if any accidents do occur.

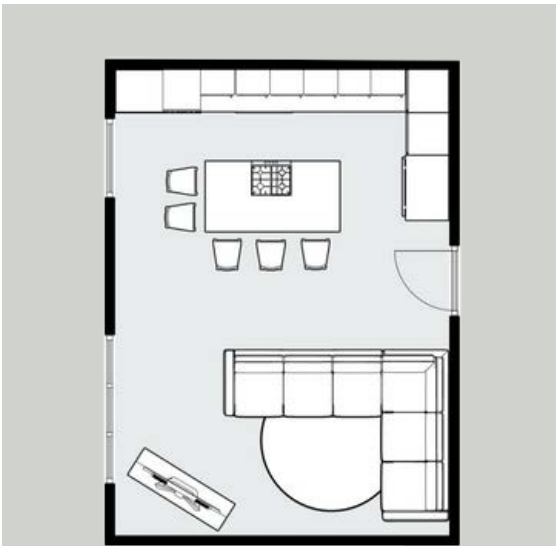


QUARTZ WORKTOPS

Quartz is the most desirable worktop material in all of modern kitchen design. Made from engineered stone, this beautiful material usually is formed into a slab with ground quartz, resins, and polymers.

Quartz comes at a premium, however, it offers a wonderful contemporary finish that can be created in a variety colours and styles. Quartz worktops are also easy to clean and, as a non porous material, they are resistant to stains and scratches. This prevents bacteria build up and maintains excellent hygiene. They also do not need to be sealed every year to ensure long lasting quality.





## / OUR RENOVATIONS

### PHELP'S KITCHEN

Designed by The Kitchen Depot in Cambuslang, the Phelp family's spacious new kitchen features the Kendal range in a rich heritage green décor. Matching steel handles add a sleek touch, while the combination of two distinct worktop styles adds texture and contrast. A classic Belfast sink completes the design, bringing timeless character to this beautifully balanced, functional space.



## / THE DETAILS

**CUSTOMER**  
The Phelp Family

**SHOWROOM**  
Cambuslang

**KITCHEN RANGE**  
Kendal

**COLOUR**  
Heritage Green

**KITCHEN LAYOUT**  
Open Plan w/ Island

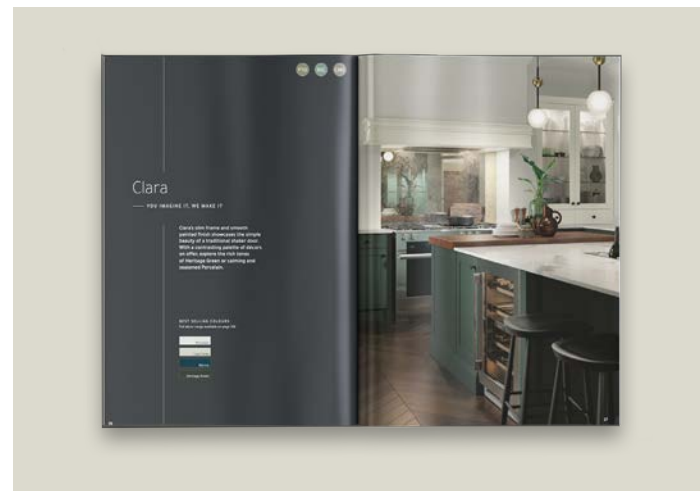




# / DOWNLOAD OUR BROCHURES

THE PERFECT INTRODUCTION TO OUR KITCHEN DESIGNS

Browse our brochures easily, by downloading them online today. Our brochures provide The Kitchen Depot's full choice of kitchen designs available, including bespoke ranges like Linea that are exclusively offered by us.

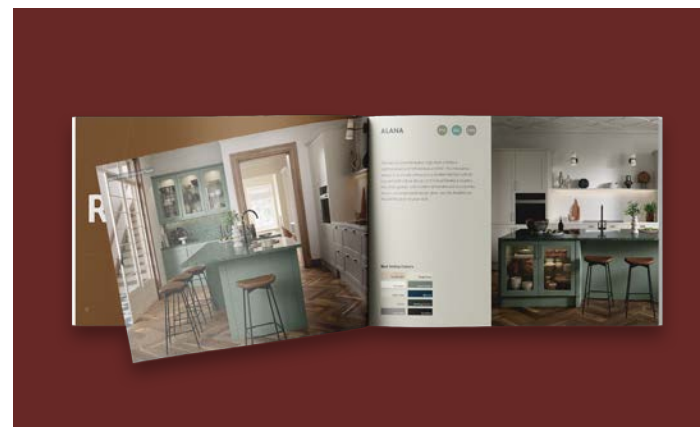


## CORE BROCHURE

Discover our full range of modern and traditional kitchens, our extensive kitchen door range and our kitchen cabinet offering.

Popular ranges featured:

- + Kendal
- + Darwin
- + Zara
- + Discovery

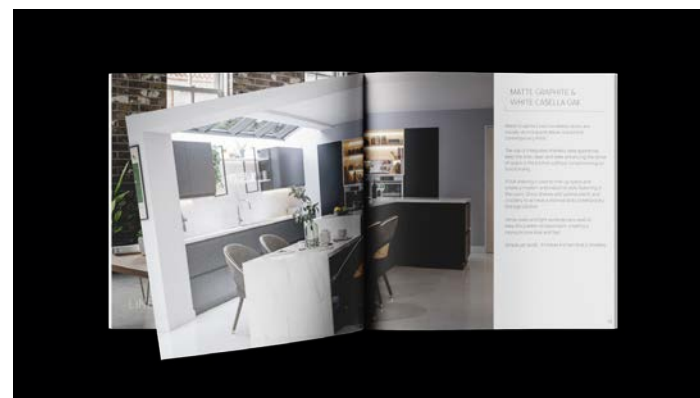


## NATURAL EDGE BROCHURE

Distinctly charming and naturally crafted. A diverse selection of shaker and in-frame effect wooden doors, each with thoughtfully designed solid wood drawers and accessories that seamlessly integrate into your kitchen.

Popular ranges featured:

- + Ashton
- + Washington



## LINEA BROCHURE

Blending functionality and design, our Linea range offers simple, sleek, and flexible solutions to open plan living. Discover our modern door styles, smarter storage solutions and home furniture options.



### / SCAN TO DOWNLOAD

Scan the QR code to download all of our brochures, and discover the difference a kitchen from The Kitchen Depot can make.

[www.thekitchendepot.co.uk/download-our-kitchen-brochures](http://www.thekitchendepot.co.uk/download-our-kitchen-brochures)





**/ MILTON KEYNES SHOWROOM**  
GRAND OPENING EVENT

We're proud to announce the opening of our brand new showroom in Milton Keynes. Designed to inspire, this space showcases our incredible range of kitchens - from timeless classics to cutting-edge contemporary designs. Customers can explore our expertly crafted collections up close, with friendly guidance from a passionate local team.

The showroom opening event was a fantastic success. Visitors were treated to delicious refreshments from a local supplier, adding a taste of the community to the celebration. The event offered a relaxed opportunity to meet and chat with our friendly team, while exploring the incredible displays that showcase the very best of our latest designs and innovations.

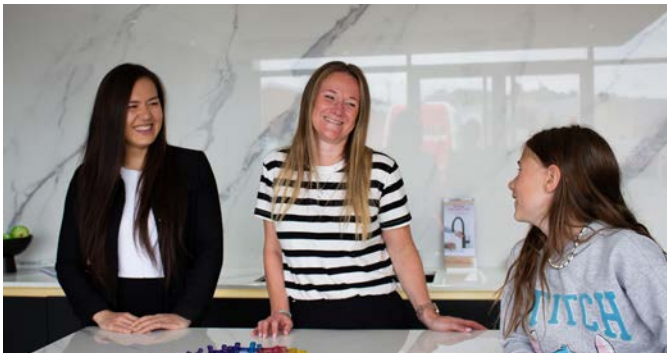
It was a memorable day filled with great conversations, inspiring interiors, and a warm sense of local connection. The team can't wait to see you at The Kitchen Depot Milton Keynes.



**/ LETCHWORTH SHOWROOM**

Big changes are underway at our Letchworth showroom as it begins a new chapter under fresh ownership, with Jess and Rachel Lyden at the helm.

The team brings a wealth of enthusiasm, local knowledge, and a deep appreciation for quality kitchen design. With a renewed focus on personalised service, customers can expect a warm welcome and expert support every step of the way.



**/ STIRLING SHOWROOM**

Our Stirling location has also embraced new leadership. The McFarlane family are committed to delivering exceptional customer experiences and bespoke kitchen solutions.

With strong ties to the local community and a shared vision for excellence, the new owners are ready to help even more customers create kitchens they'll love for years to come.

If you're a dog-lover, pop in and say hello to Max and Amber - make sure you bring biscuits!







# / NATURAL EDGE

DISTINCTLY CHARMING, NATURALLY CRAFTED

The warmth and natural beauty of solid wood paired with the precision of modern design create a harmonious blend between rustic craftsmanship and modern functionality. Natural Edge stands out for its exceptional customisation, offering an extensive paint-to-order palette and a wide choice of door styles with interchangeable accessories - blending the warmth of natural materials with a design that's uniquely yours.



## / WHY NATURAL EDGE?

**Warmth Meets Modern Style**  
Striking the perfect balance between rustic and refined, this range brings warmth and texture to sleek, modern spaces.

**Crafted for Everyday Living**  
Built from high-quality materials, Natural Edge kitchens are designed to be as durable as they are beautiful - ideal for busy family homes, keen cooks, or anyone who loves to entertain.

**Customisable to Your Taste**  
With a variety of styles, décors, and layouts available, our Natural Edge range can be tailored to suit your space, whether you're after bold contrast or subtle harmony.



Scan to explore all that our Natural Edge range has to offer.

[thekitchendepot.co.uk](https://thekitchendepot.co.uk)

## 10 KITCHEN STYLES TO CHOOSE FROM

Diverse selection of shaker and in-frame effect wooden doors, each with distinct character.

- |              |           |              |
|--------------|-----------|--------------|
| + Alana      | + Aria    | + Ashton     |
| + Hartford   | + Jackson | + Jamison    |
| + Lianna     | + Madison | + Washington |
| + Winchester |           |              |







**/ CHOOSING A SINK & TAP**  
STYLE, FUNCTION AND EVERYDAY LIVING

When planning a new kitchen, it's easy to get caught up in cabinet colours and worktop finishes - but don't overlook the importance of your sink and tap. These are some of the most-used features in any kitchen, and the right combination can elevate both the function and the feel of your space.

Here's what to consider when choosing the perfect sink and tap pairing.

**/ FUNCTION FIRST**

Think about how you use your kitchen day to day. Do you do lots of washing up by hand? Do you need space to rinse and prep vegetables? If you have a dishwasher, a single-bowl sink might be enough. If not, a 1.5 or double bowl can make multitasking much easier.

Top tip: Consider adding a deep bowl if you regularly wash large pots or trays.



**/ STYLE AND PRACTICALITY**

Your sink and tap should complement your kitchen and suit your kitchen's overall style - but it should also work hard for you. Finish options range from traditional chrome to brushed brass or matte black - so it's easy to coordinate with your handles, appliances, or lighting.

Your sink and tap are the unsung heroes of the kitchen - choose ones that work hard and look great doing it.

Visit your nearest showroom to explore our full range of sinks and taps.

[thekitchendepot.co.uk](http://thekitchendepot.co.uk)

WHICH STYLE OF TAP SHOULD YOU GO FOR?



**/ BOILING WATER**

The Quooker Tap is the ultimate time - saver for busy households, delivering instant 100°C boiling water alongside hot, cold, and even filtered or sparkling water (depending on the model). Ideal for working parents, tea lovers, or anyone who values convenience, this innovative tap combines sleek, contemporary styling with everyday practicality.



**/ PULL-OUT SPRAY**

Blending professional-style performance with everyday ease, the Candor Caple Pull-Out Tap offers a powerful spray function and flexible hose - great for rinsing pans, cleaning awkward corners of your sink, or giving fresh produce a quick wash. Its pull-out nozzle retracts smoothly, maintaining a clean, streamlined look.



**/ CLASSIC LEVER**

Understated, practical, and elegantly modern, the Caple Carena Single Lever Tap offers easy temperature and flow control with a single handle. It's minimalist design works beautifully with a range of kitchen styles, from classic shaker to ultra-modern. A go-to choice for those who want simplicity without compromising on quality.

WHICH SINK MATERIAL IS RIGHT FOR YOU?

The material of your sink not only affects how it looks, but also how it performs over time.

**/ STAINLESS STEEL**

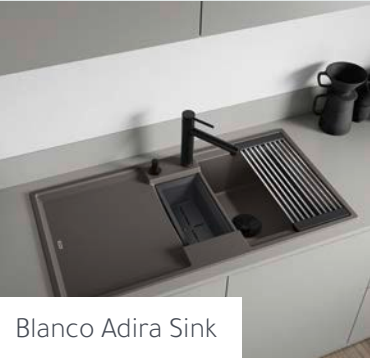
- ✓ Versatile and durable
- ✓ Matches modern appliances



Blanco Lemis Sink

**/ GRANITE**

- ✓ Matte, stone-like finish
- ✓ Scratch and heat resistant



Blanco Adira Sink

**/ CERAMIC**

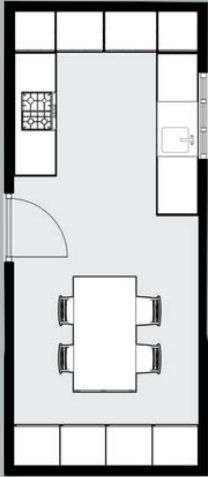
- ✓ Timeless and elegant
- ✓ Easy to wipe clean



Caple Belfast Sink







**/ THE DETAILS**

**CUSTOMER**  
The McQuat Family

**SHOWROOM**  
Rosyth

**KITCHEN RANGE**  
Zara Matte

**COLOUR**  
Cashmere


**KITCHEN LAYOUT**  
U-Shape w/ Larders



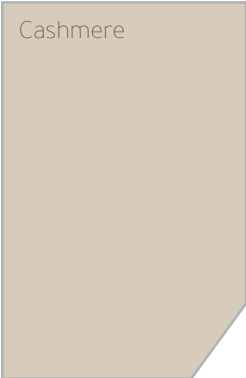
**/ OUR RENOVATIONS**  
MCQUAT'S KITCHEN

The McQuat family's new kitchen, expertly designed by The Kitchen Depot in Rosyth, embraces clean, modern lines with the Zara Matte slab door in a soft cashmere finish. Silver handleless rails add a sleek, minimalist touch, while dynamic strip LED lighting under the worktops enhances the space with a contemporary glow. The result is a stylish and functional kitchen that radiates understated elegance.


Zara Range



Cashmere



Silver Handleless Rail







# / ZUMA SOUND & LIGHTING SYSTEM

LIGHT & SOUND REINVENTED

Zuma is an immersive loudspeaker and a premium LED light, intelligently paired inside a single spotlight in your ceiling. Wireless, virtually invisible, and an absolute breeze to install and use. This is smart home tech, finally made simple.



## / THE GREAT TKD BAKE OFF JUNE'S NO BAKE CHEESECAKES

Deliciously simple and effortlessly indulgent, no bake cheesecakes are the perfect treat for any occasion. Our resident **Queen of the Kitchen, June Colquhoun**, has the perfect recipe that requires no oven time—just a few ingredients and a little creativity. Whether you're entertaining guests or enjoying a quiet moment at home, these cheesecakes are sure to impress.



### / METHOD

#### Base

1. Melt the butter in the microwave or in a small pan over a medium heat.
2. Blitz the biscuits to a fine crumb in a food processor.
3. Add the melted butter to the biscuit crum and pulse a few times until the mixture is well combined.
4. Divide the mixture between two glasses and press down.

#### Filling

1. In a large bowl, whisk the soft cheese, vanilla extract, and icing sugar until smooth.
2. Add the double cream and cocoa powder, then whisk again until smooth and thickened.
3. Spoon the mix equally into the glasses, and level carefully.
4. Chill in the fridge for an hour or so until set.

#### Decoration

1. Dollop a light layer of Nutella on the top of each cheesecake and place your fresh strawberries on top of this.

### / INGREDIENTS

#### BASE

- + 30g unsalted butter
- + 60g digestive biscuits

#### FILLING

- + 100g full-fat soft cheese
- + 1/2 tsp vanilla extract
- + 1 tbsp icing suger
- + 50ml double cream
- + 25g cocoa powder

#### DECORATION

- + Fresh strawberries
- + Nutella

*Happy baking!*  
- June x



/ PAINT-TO-ORDER

AVAILABLE SELECTION

We offer a wide range of décors in our paint-to-order service. Browse our extensive palette below to find the colour that's just right for you. Ask our expert designers for advice on our selection and they'll be happy to help you in store.

WHITES / CREAMS

	White
	Porcelain
	Ivory

BIEGES

	Shell
	Taupe Grey
	Mussel
	Stone
	Stone Grey
	Lava

GREENS

	Sage Green
	Cardamom
	Reed Green
	Willow
	Viridian
	Heritage Green
	Deep Forest

BLUES

	Pantry Blue
	Light Teal
	Airforce
	Parisian Blue
	Marine
	Slate Blue
	Indigo

GREYS

	Light Grey
	Dust Grey
	Monument Grey
	Gunmetal Grey
	Graphite
	Cannon Black

PINKS

	Cashmere
	Vintage Pink
	Antique Red



/ OUR HANDLE COLLECTION

Our suite of handles has been carefully chosen to compliment a range of styles. Discover more of our selection in your local showroom.

<b>K1-177 BOW HANDLE</b> CHROME 255mm Slimline Bow Handle	<b>K1-172 CUP</b> CHROME 64mm Cup with backplate	<b>K1-147 BOW HANDLE</b> CHROME 160mm Modern Bow Handle	<b>K1-314 KNOB</b> CHROME 59mm Rectangular Knob
<b>K1-265 D-HANDLE</b> ANTIQUE COPPER 160mm Rounded D-handle	<b>K1-262 KNOB</b> ANTIQUE COPPER 59mm Rectangular Knob	<b>K1-166 D-HANDLE</b> INOX LOOK 160mm Rounded D-handle	<b>K1-274 KNOB</b> INOX LOOK 42mm Round Flat Knob
<b>K1-302 CUP</b> BRUSHED SATIN BRASS 64mm Round Cup	<b>K1-303 BOW HANDLE</b> BRUSHED SATIN BRASS 160mm Bow Handle	<b>K1-351 T-BAR</b> BRUSHED BRASS 32mm T-bar	<b>K1-333 TRIM HANDLE</b> BRUSHED BRASS 32mm Trim, Front Fixed
<b>K1-392 D-HANDLE</b> MATTE BLACK 224mm Slimline D-Handle	<b>K1-220 KNOB</b> MATTE BLACK 34mm Round Knob	<b>K1-377 BAR HANDLE</b> BRUSHED NICKEL 160mm Fluted Bar Handle	<b>K1-384 T-BAR</b> BRUSHED NICKEL 60mm Square T-bar



# / TRY OUR ONLINE 3D DESIGN PLANNER

READY TO START PLANNING YOUR DREAM KITCHEN?

Create your kitchen plan using our online kitchen planner and free kitchen design tool. The 3D Design Software creates beautiful kitchen images and is super simple to use. Visualise your kitchen design and plan your layout easily.

## HOW TO USE OUR KITCHEN DESIGN TOOL

Kickstart your kitchen planning by getting creative with your very own DIY kitchen planner.

### / CHOOSE YOUR KITCHEN STYLE

Modern or Traditional

### / CHOOSE YOUR PREFERRED DOOR STYLE

We have a wide range to choose from  
Slab / J-Handle / Shaker

### / CHOOSE THE DÉCOR AND COLOUR OPTIONS

Here you can select the colour or décor you would like your doors to be and if you would like to see the doors with handles or in a handleless style on your finished kitchen layout.

### / ROOM CHANGES

You can change the colour of the walls and flooring style to match your style and taste easily.

### / SAVE AND SEND

Save your visuals and send them to your designer ahead of your appointment or print them off and bring them with you. Your kitchen designer will use the visuals and your measurements as a starting point for your design. They will offer advice and create numerous visuals and floor layouts during your design appointment using our CAD software.



Scan to get started designing your dream kitchen.

[www.thekitchendepot.co.uk/3d-design-planner](http://www.thekitchendepot.co.uk/3d-design-planner)

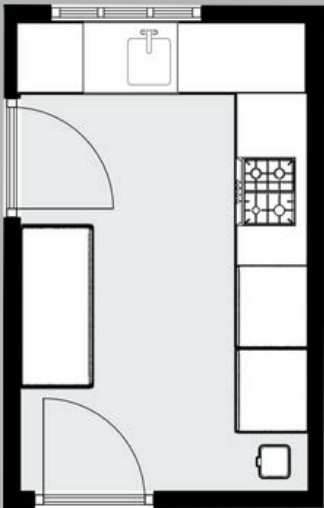
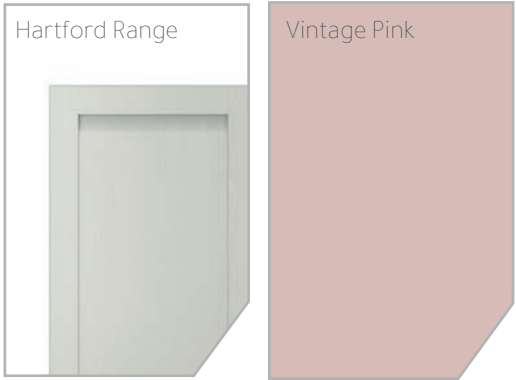






**/ OUR RENOVATIONS**  
SLATTERY'S KITCHEN

Designed by our Shrewsbury showroom, Slattery's kitchen is a playful celebration of personality and style. Opting for the Hartford range in eye-catching vintage pink, this space makes a confident statement while maintaining a sleek silhouette with integrated door handles. Anthracite Pietra Grigia worktops bring depth and drama, perfectly balancing the bold cabinetry for a space that's as charming as it is distinctive.



**/ THE DETAILS**

**CUSTOMER**  
The Slattery Family

**SHOWROOM**  
Shrewsbury

**KITCHEN RANGE**  
Hartford

**COLOUR**  
Vintage Pink

**KITCHEN LAYOUT**  
L-Shaped w/ Island



# / ASK THE EXPERT

## KITCHEN FITTING PROCESS

We understand that planning a new kitchen is a big investment - both in time and money. While choosing the style, layout, and finishes is exciting, the actual fitting process can often feel like the most overwhelming part. It's not just about installing cabinets and appliances; it's about coordinating trades, managing timelines, and making sure everything runs smoothly in your home.

In this section, we answer some of the most common queries about kitchen installations - from how long it takes to how you can make the process as stress-free as possible. Whether you're at the very start of your renovation journey or preparing for the fitting to begin, we're here to guide you every step of the way.



WHAT DOES THE TYPICAL INSTALLATION PROCESS LOOK LIKE?

**Douglas:** The process of installing a kitchen may vary slightly depending on the fitter, but the general order of work remains pretty consistent. Ultimately, it's the final result that matters most.

1. Kitchen Removal
2. First Fix
3. Plastering
4. Fit Cabinets
5. Fit Worktops
6. Second Fix
7. Tiling Splashbacks
8. Finishing Touches



### MEET DOUGLAS, SENIOR KITCHEN FITTER

We sat down with Douglas, one of our most experienced kitchen fitters, to answer some of the most common questions homeowners ask when planning a new kitchen. With over 20 years on the job, Douglas has seen it all - and shares his practical advice for a smooth and successful installation.

WHAT'S THE FIRST THING SOMEONE SHOULD CONSIDER BEFORE STARTING A KITCHEN INSTALLATION?

**Douglas:** Functionality. It's easy to get caught up in finishes and colours, but the layout has to work for how you live. Think about how you cook, how often you entertain, and how much storage you need. The design should make life easier, not just look good.

HOW LONG DOES A TYPICAL KITCHEN INSTALLATION TAKE?

**Douglas:** Usually between 1 to 2 weeks, depending on the size of the kitchen and whether it includes things like moving plumbing or electrics. If we're knocking down walls or fitting custom pieces, it might take a bit longer—but we always aim to keep disruption to a minimum.

DO CUSTOMERS NEED TO EMPTY THEIR KITCHEN BEFORE WORK BEGINS?

**Douglas:** Yes, 100%. It makes the job quicker and safer for everyone. Clear out all cupboards and drawers, and remove anything on the worktops. If you can, set up a temporary kitchen space elsewhere - just a kettle and microwave can go a long way.



WHAT CAN I DO TO MAKE THE INSTALLATION GO AS SMOOTHLY AS POSSIBLE?

**Douglas:** Good communication makes a big difference. If there's anything unusual about your space - like uneven floors, old wiring, or access issues then let us know in advance. It's also helpful to be available (or have someone who is) during key moments of the installation in case we need quick decisions. And finally, a clear workspace helps us work safely and efficiently - so if you can, keep the area free from pets and little ones while we're fitting.

WHAT'S YOUR FAVOURITE PART OF THE JOB?

**Douglas:** The reveal. I love seeing the customer's face when it all comes together. A new kitchen really transforms a home - it's not just where people cook, it's where they live. Knowing I had a hand in that is a great feeling.



**Douglas:** Thanks for taking the time to read some of our most frequently asked questions regarding the installation process. We hope to see you soon on your kitchen journey!



Scan the QR code to download your own home measuring template.

[thekitchendepot.co.uk](https://thekitchendepot.co.uk)



Don't forget to bring your notes with you when you visit us in-store – our team would love to help you turn your ideas into a reality.

This image shows a single sheet of white paper with horizontal ruling lines. The lines are evenly spaced and run across the width of the page. There are no margins, text, or other markings on the paper.

## / FAVOURITE DÉCORS

---

---

---

---



THE ONLY KITCHEN FRANCHISE NETWORK  
TO MANUFACTURE IN THE UK



Our proven business model ensures that your efforts translate into tangible financial rewards, setting you on the path to long-term success.



Enjoy the benefits of entrepreneurship without the burden of excessive initial expenses.



Delight your customers with products proudly manufactured in the UK,  
synonymous with quality, reliability, and craftsmanship.



From initial setup to ongoing operations, our dedicated team is committed to your success, providing guidance, resources, and mentorship.



**4.9 Stars and 800+ Reviews** ★★★★★

Gain a competitive edge with a sterling reputation for excellence. Our products and service consistently earn high praise from satisfied customers, reflected in our exceptional rating and numerous glowing reviews on Trustpilot.

INTERESTED IN JOINING THE  
KITCHEN DEPOT'S JOURNEY?

— GET IN TOUCH



Graham Bucktrout - Franchise Director  
T: 07717 596 189  
E: [graham.bucktrout@thekitchendepot.co.uk](mailto:graham.bucktrout@thekitchendepot.co.uk)

**thekitchendepot.co.uk**







[thekitchendepot.co.uk](http://thekitchendepot.co.uk)